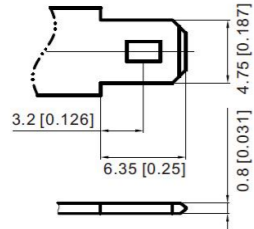


AGM AKÜ TERMİNAL TİPLERİ

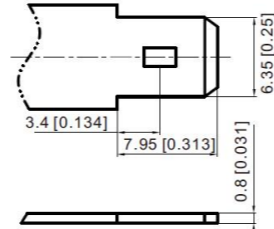
T1 Terminal

FASTON TYPE (Copper) quick disconnect tabs; silver coating for better conductivity



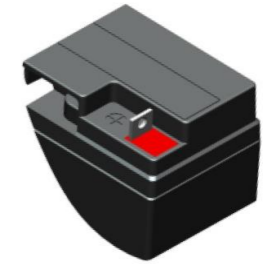
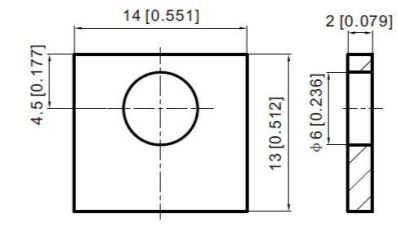
T2 Terminal

FASTON TYPE (Copper) quick disconnect tabs; silver coating for better conductivity



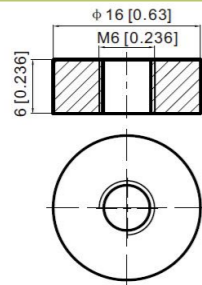
T3 Terminal

Brass Coated With Tin
Torque: 3.9 ~ 5.4 N*m(34.39 ~ 47.75 in*lbs)



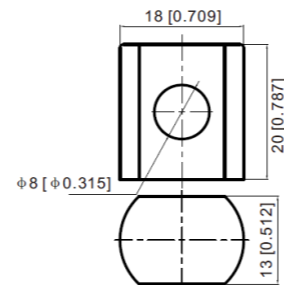
T6 Terminal

Brass Coated With Tin; Threaded Insert 6mm STUD
Torque: 3.9 ~ 5.4 N*m(34.39 ~ 47.75 in*lbs)



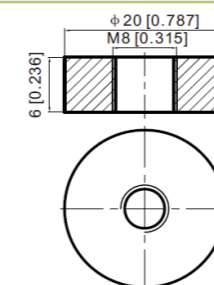
T9 Terminal

Lead
Torque: 11 ~ 14.7 N*m(97.28 ~ 130.0 in*lbs)



T11 Terminal

Brass Coated With Tin; Threaded Insert 8mm STUD
Torque: 11~14.7 N*m(97.28 ~ 130.0 in*lbs)



T12 Terminal

Brass Coated With Tin; Threaded Insert 5mm STUD
Torque: 2.0 ~ 3.0 N*m(17.69 ~ 26.53 in*lbs)

